

## Oil level indicators

- **Threaded body**

Polyamide-based (PA) technopolymer threaded case. Resistant to solvents, oils, greases and other chemical agents.

- **Standard colour**

Black standard colour with bright finish.

- **Window**

Special transparent polyamide based (PA-T/AR) technopolymer assembled by a special procedure that ensures perfect visibility and resistance throughout its working life. Resistant to alcohol, solvents, oils with additives, greases, acids and alkali.

- **Contrast screen**

Anodised aluminium star-shaped and central level sight hole.

- **Packing ring**

NBR synthetic rubber.

- **Maximum continuous working temperature at 3 bar pressure**

100°C.

- **Accessories on request**

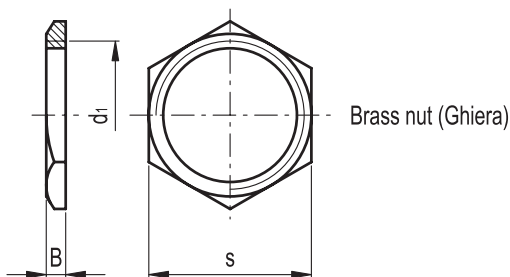
Brass nut (GHIERA) for fitting to tanks with wall thickness under 5 mm.



### Technical data

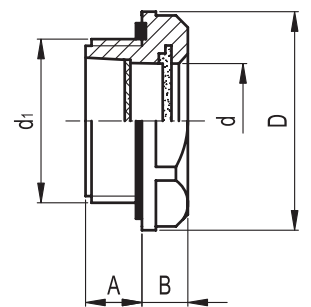
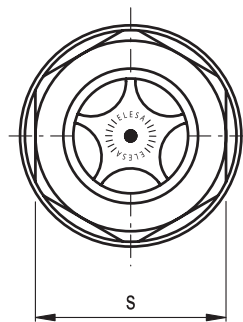
A moderate torque (see table below) is recommended when screwing oil level indicator so as to guarantee optimal tightness without any elastic deformation. Suggested tightening torque is the result of laboratory tests at room temperature (23°C) with oil level indicator, packing ring and reservoir walls perfectly cleaned.

For use with fluids containing special additives, contact ELESA Sales Department.



Brass nut (Ghiera)

Standard elements		Main dimensions			Weight
Code	Description	d1	B	s	grams
15001	GHIERA 3/8	G3/8	3.5	19	3
15011	GHIERA 1/2	G1/2	4	26	8
15021	GHIERA 3/4	G3/4	5	31	12
15031	GHIERA 1	G1	5	37	14
15041	GHIERA 1 1/4	G1 1/4	5.5	46	23
15051	GHIERA 2	G2	6	65	50



Standard elements		Main dimensions						Tightening torque	Weight
Code	Description	d1	A	B	D	d	s	[N*m]	grams
14441	HGFT.10-3/8	G 3/8	8	7	24	11	22	4 ÷ 8	4
14461	HGFT.13-1/2	G 1/2	10	8.5	28	14.5	24	6 ÷ 8	6
14481	HGFT.16-3/4	G 3/4	9.5	8.5	35	18	32	8 ÷ 10	10
14521	HGFT.21-1	G 1	11	9.5	42.5	23	38	10 ÷ 12	15
14541	HGFT.25-1 1/4	G 1 1/4	11	9	50	30	46	12 ÷ 15	30
14561	HGFT.40-2	G 2	12	11	68	40	62	12 ÷ 15	60